



QUALIS COMMUNITY CIC LCLC UPDATE

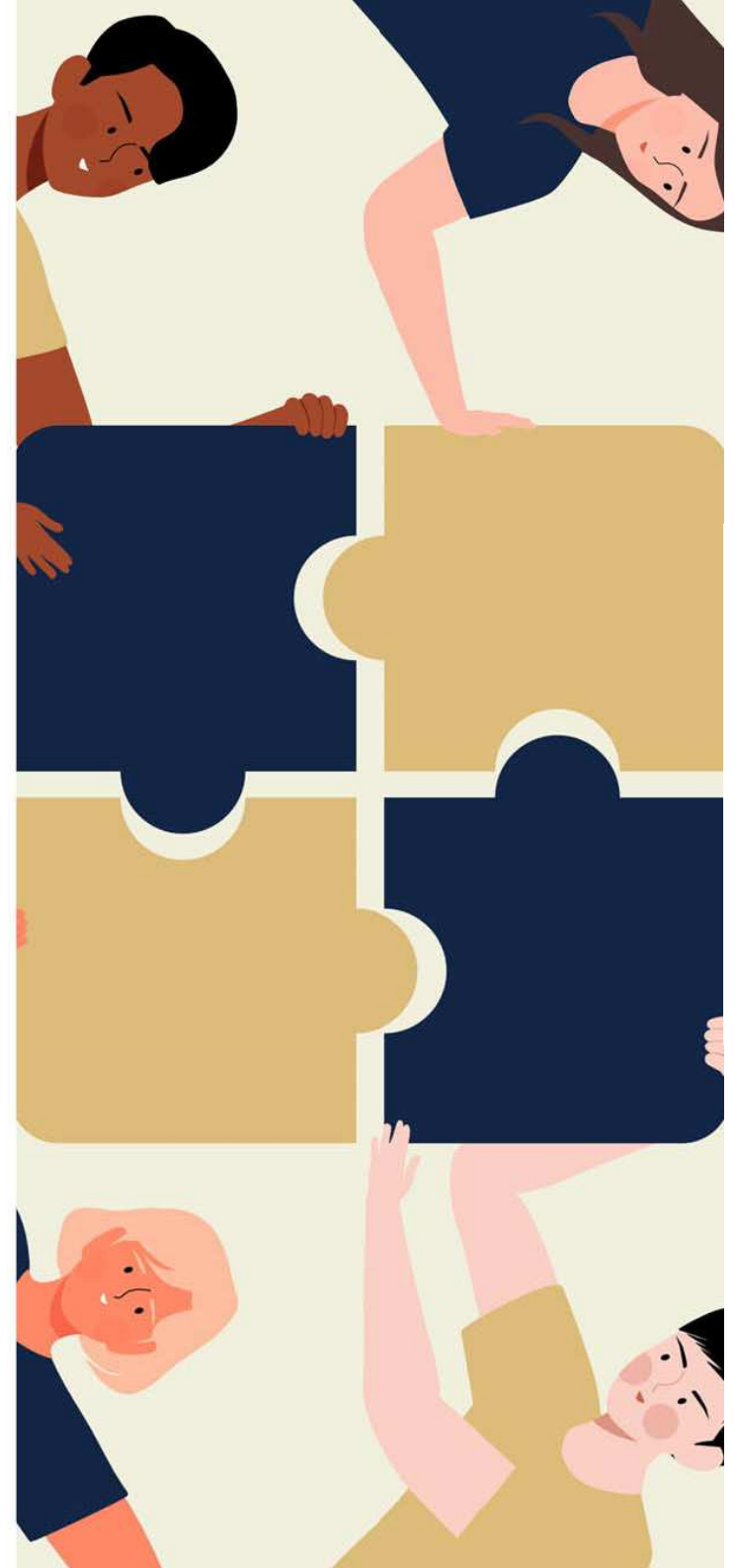
Delivering for the whole of Epping Forest
District through partnership

Primera

Qualis 
COMMUNITY

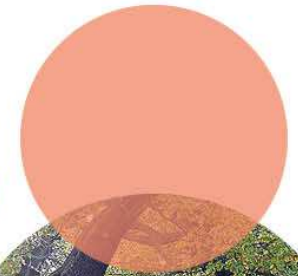
Getting the most out of your consulting partnerships

- The CIC represents an incredible opportunity for all communities located across the district to shape a powerful agenda of transformation and improvement. Working collaboratively, the CIC offers local residents and the wider stakeholder community an outstanding opportunity to invest in a better future.
- A partnership created by Qualis Group and EFDC supports the community in having a stronger and more influential voice to raise the profile and better promote Epping Forest as a place to live, play and do business through Qualis Community.
- A rigorous and transparent governance structure will ensure that activities align with local need and are developed through close dialogue with local communities and wider stakeholders including town and parish councils.



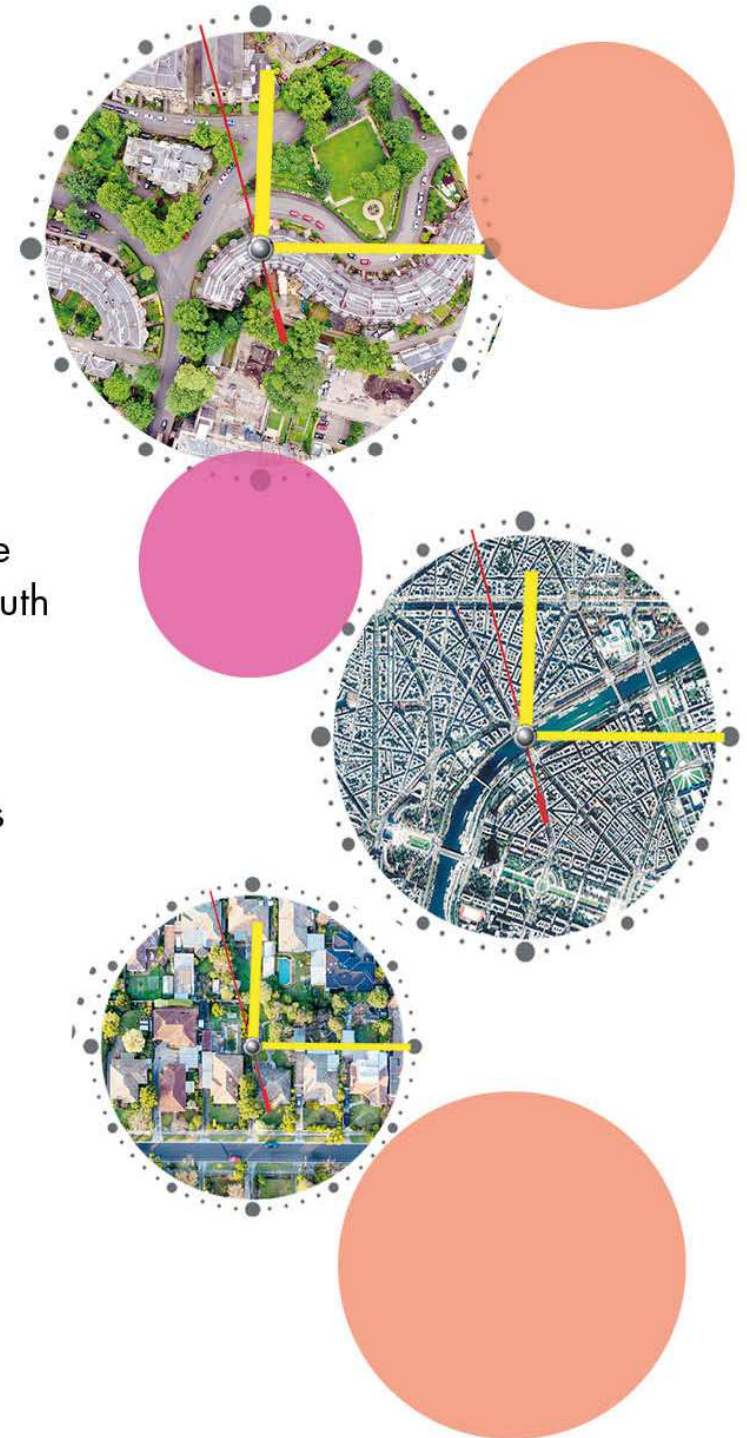
Creation of a CIC

- Understanding the key issues and priorities for the community and business forms an important step in the consultation in gauging what is deliverable and achievable for the area.
- More fundamentally its looking to build on the good work already underway by various community groups and EFDC, citing where the CIC will add value in harnessing opportunities for the direct benefit of the local community, promoting good growth and generating social and economic opportunities.
- Through our consultation we are reaching out to EFDC and parish councils, the wider stakeholder community to identify and highlight additional services they would like the CIC to deliver.



Primera has been appointed to support Qualis Community on the establishment of a new CIC.

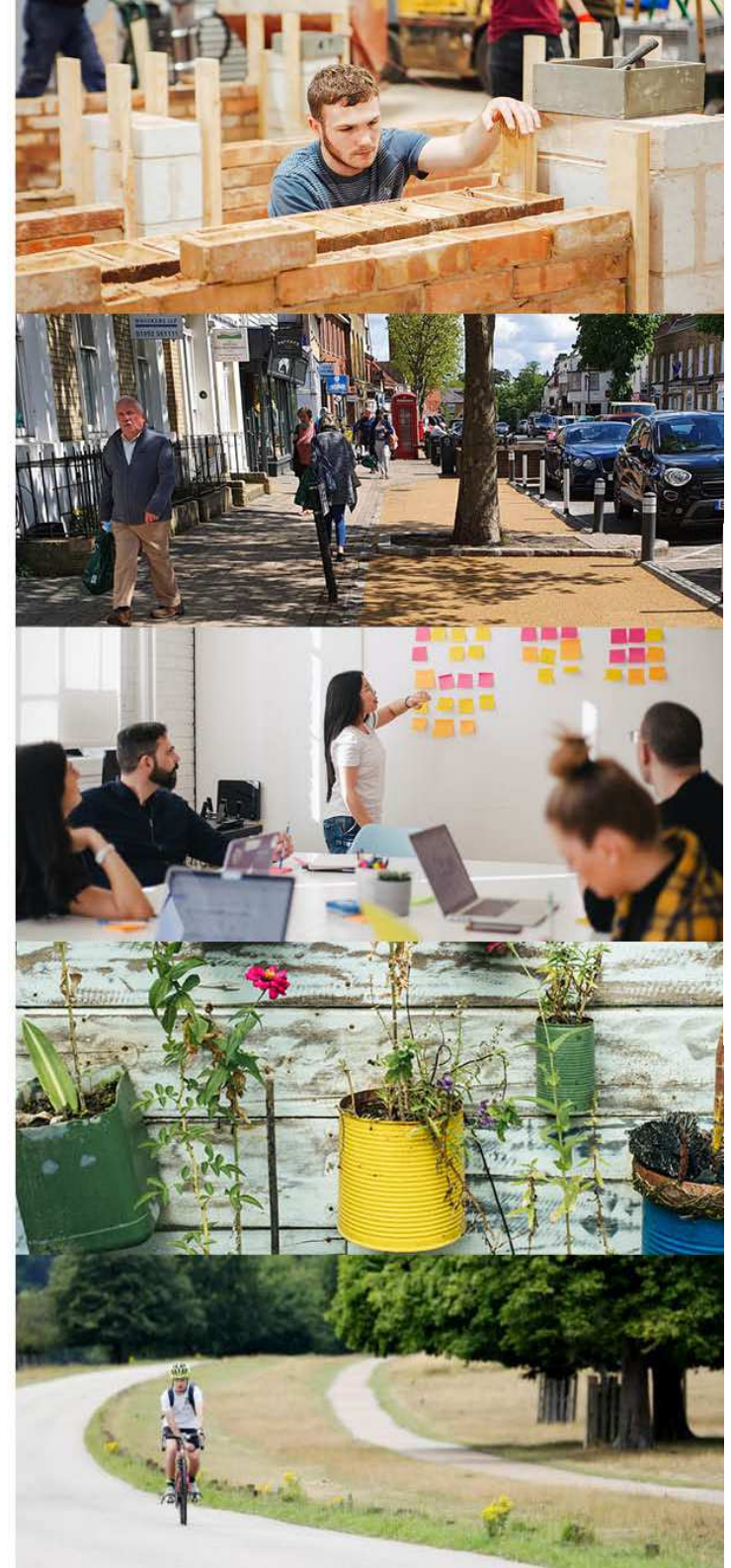
- Primera is consulting with a number of stakeholder groups across the local community, businesses, Essex Police, EFDC and Epping Forest Youth Council.
- Extensive consultation is enabling Qualis Community to formally gauge the views from local community groups in the area, with a focus on Waltham Abbey and Epping Town Centre.
- A survey has been created to capture peoples thoughts, ideas and suggestions to outline what can be achieved by the CIC between now and 2025. Dialogue with local communities and wider stakeholders including district, town and parish councils.



Emerging themes

Understanding the key issues and priorities for the community and business forms an important step in the consultation in gauging what is deliverable and achievable for the area. Feedback to date has focused on five key areas:

- Employment and Training
- Placemaking/public realm
- Business, Enterprise and innovation
- Sustainable Environment
- Transport



Strategic themes

Based on the consultation undertaken to date; three emerging strategic themes have been identified.

This will include identifying appropriate funding sources and how the CIC can generate its own income. The three strategic themes are:

1. Employment, enterprise and innovation
2. An outstanding environment
3. Accessible and inclusive neighbourhoods



Employment, enterprise and innovation

Conversations to date have identified employment and skills training as an area of activity that could be led by the CIC, working in partnership with local FE institutions.

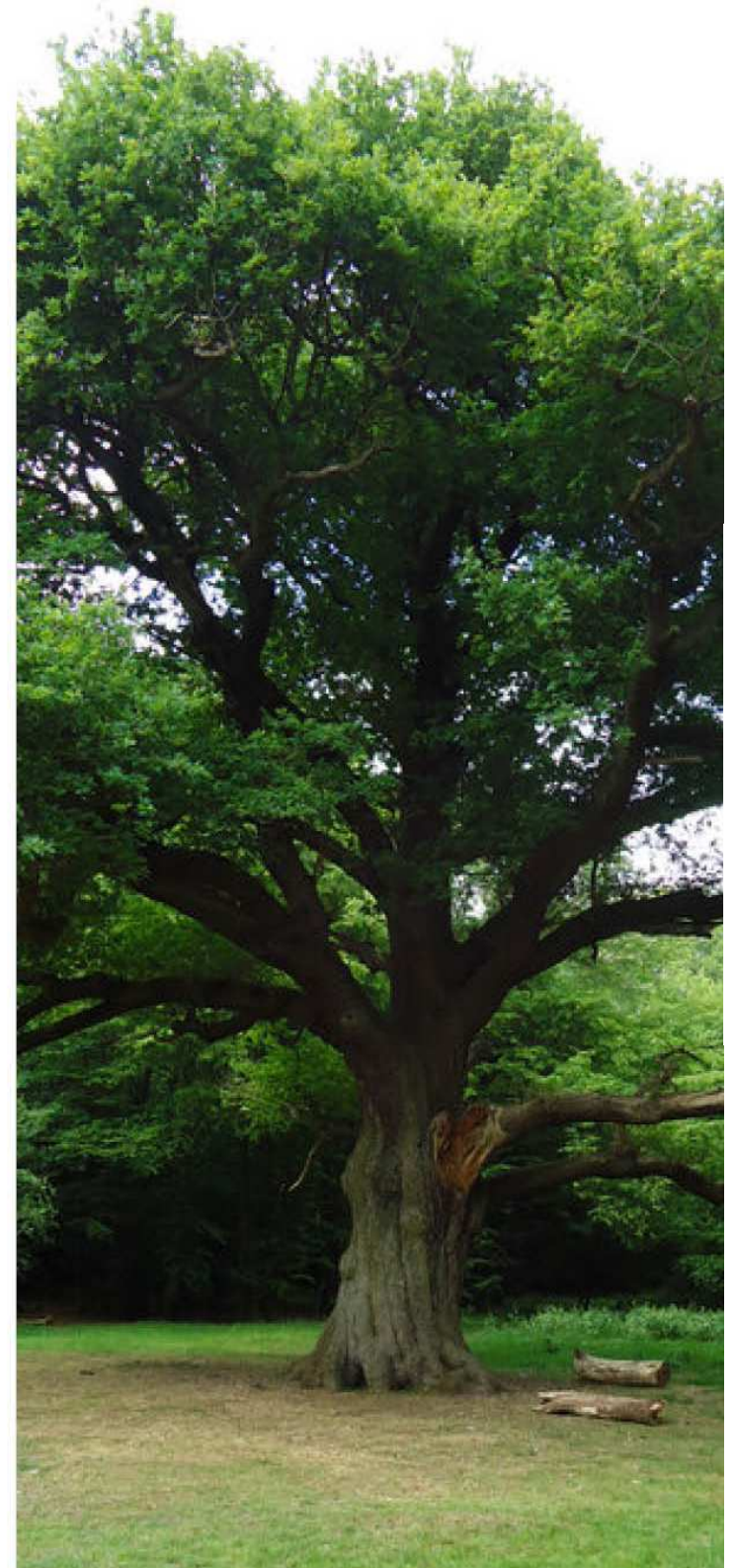
- Construction industry could be a key sector, providing apprenticeship training opportunities and upskilling existing employees, across a range of occupational areas.
- Supporting SMEs and business start-ups
- Taking advantage of digital opportunities



An outstanding environment

People and place have become even more important as a result of the pandemic. The district is also home to Epping Forest, an ancient forest of both environmental and ecological significance. Huge opportunities to deliver tangible enhancements under this strategic theme

- Promote the important role of green spaces
- Work with local communities on issues such as safeguarding greenbelt
- Enhancing access to green spaces – signage, wayfinding, for example
- Climate change



Accessible and inclusive neighbourhoods

There are several emerging opportunities to build a sustainable income stream through this strand of activity:

- Community hub working with in partnership with EFDC
- Placemaking will be fundamental to the longer-term aspirations for the district, and maximising the potential of creating a 15 minute city
- Changing working practices / evolving demographics / adapting to new ways of living and working (post pandemic)
- Partnership model in the future: Business Improvement District/ 15 minute city



Next steps and a timeframe for delivery

The activities identified within each strategic area align closely with the policies of both the EFDC and Qualis Group.

- The strategy will set out a programme of activity, which will provide the opportunity to test and explore some of the more ambitious areas of activity. The programme is based on activities from Oct 2021 until Sept 2025
- A focus on additionality and complementing the work of the council and its partners – no duplication
- Aspiration to add long term value to the communities across EFDC – no quick wins, we must bring communities with us
- We will continue to work with a range of stakeholders, communities and groups and always welcome views and input. You can view the consultation survey [here](#).

Thank you for your time and we look forward to working with you on this exciting project for Epping Forest District.

